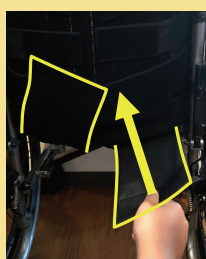


▶ GRC-11B

GRACE CORE high grade wheelchair basic function



- ◉ Wheelchair with big wheel type (No need a helper).
- ◉ 3D backrest can be adjusted according to the body.
- ◉ The footrest can be height-adjusted.
- ◉ Able to support the pelvis.
- ◉ The structure is made of aluminum, strong and lightweight.
- ◉ Front and rear wheels are solid tires, no need to inflate.
- ◉ Parking brake wheel lock, Drum Brake.
- ◉ Nylon cushions are available in 3 colors.



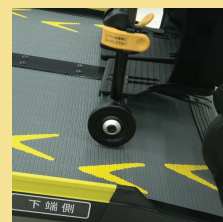
pelvic support



seat depth adjustment



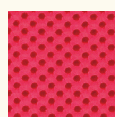
triangular backrest



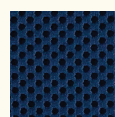
Additional wheels to prevent the footrest from colliding with the floor at different levels.

Seat Width	Seat Height	Seat Depth	Arm Support Height	Back Support Height	Foot Support Length	Overall Width	Overall Depth	Overall Height	Caster Size	Rear Wheel Size	Max. User Weight	Weight
40	43	38	25	56	29~	56.5	95	93	5"	22"	100	14.7

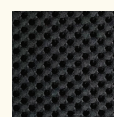
COLORS



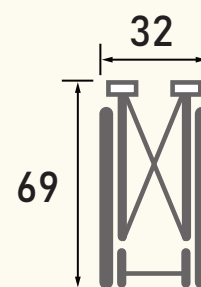
M-11
RED



M-12
NAVY



M-13
BLACK



FOLD

GRC-11B